



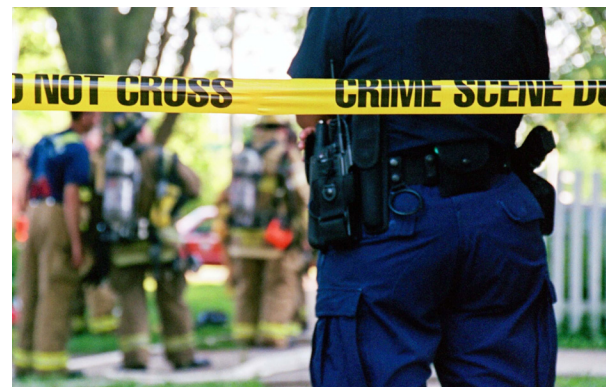
First Responder Training

First responders face a variety of emergency and non-emergency situations. Knowing how to help victims while keeping themselves safe is vital to their safety and job performance.

OverNite Software, Inc.'s First Responder Training courses cover all topics in the National Highway Traffic Safety Administration (NHTSA) Standard Curriculum and are a valuable addition to your first responder training program. The First Responder Training series consists of 36 courses, including Well-Being of the First Responder, Legal and Ethical Issues, Patient Assessment, CPR, Emergency Childbirth, and more. These courses are eligible for CE hours under Texas Dept. of State Health Services On-going Program No. 600196. OSI's First Responder Training is intended for:

- Police Officers
- Fire Fighters
- Emergency Medical Technicians
- Hospital Workers
- Social Workers
- Other First Responders

Our courses are delivered via a state-of-the-art learning management system that allows you to customize curricula, adjust testing parameters, and even customize courses with site-specific content and photos.



For more information call 1.888.228.2473 or visit OverNiteCBT.com

401 Introduction to EMS Systems: Part 1 teaches first responders about the components of the human circulatory system, taking a close look at the heart, blood, and blood vessels. Heart health is also discussed, including the impacts of cardiac arrest, high blood pressure, and shock on the human body. (70 min) (1 CE)

402 Introduction to EMS Systems: Part 2 tackles the methods used to ensure the quality of patient care, including certification, medical oversight, and continuous quality improvement. (40 min) (1 CE)

403 Well-Being of the First Responder examines stress that first responders may experience, reactions to death, and emergency response hazards. (45 min) (1 CE)

404 Legal and Ethical Issues focuses on the ethical responsibilities of a first responder, including scope of practice, standard of care, patient confidentiality, and other similar topics. (50 min) (1 CE)

405 The Human Body is designed to provide first responders with an overview of the human body, including the muscular, skeletal, circulatory, respiratory, nervous, and other systems. (50 min) (1 CE)

406 Lifting and Moving Patients examines techniques for lifting and moving patients and for preventing injuries by utilizing proper body mechanics. (50 min) (1 CE)

407 Body Substance Isolation discusses methods to prevent exposure to infectious diseases. (45 min) (1 CE)

408 Interpersonal Communications addresses reacting to and helping victims cope with traumatic events, discussing sensitive topics, and discussing death and dying appropriately. (55 min) (1 CE)

409 Airway: Part 1 explains the respiratory system, protective equipment for first responders, techniques for opening airways, signs of respiratory distress, foreign bodies, and airway devices. (60 min) (1 CE)

410 Airway: Part 2 explains the difference between ventilation and oxygen therapy, when to implement rescue breathing, unconscious patients, methods of rescue breathing, and special circumstances. (40 min) (1 CE)

411 Patient Assessment: Part 1 explains the process of patient assessment, on-scene hazards and precautions, determining the nature of injuries or illness, assessment priorities, and stabilizing the patient. (40 min) (1 CE)

412 Patient Assessment: Part 2 explains why it is important to get a detailed patient assessment, the normal ranges of each of the baseline vital signs, and outlines the steps in a detailed physical exam. (70 min) (1 CE)

413 Patient Assessment: Part 3 reviews the steps of a patient assessment and outlines the communication and documentation measures required for patient transfer of care. (60 min) (1 CE)

414 Circulation addresses the components of the circulatory system and their functions, cardiac arrest and quick intervention, and recognizing shock. (85 min) (1 CE)

415 Cardiopulmonary Resuscitation (CPR) explains how to give CPR to infants, children, and adults. The information is based on the American Heart Association Guidelines and should be taken with, or in review of, an actual instructor-led, hands-on course. (60 min) (1 CE)

416 Medical Emergencies: Part 1 explains recognition and immediate intervention for life-threatening conditions, and care techniques for cardiac, respiratory, poisoning, allergic reaction, and exposure treatments. (40 min) (1 CE)

417 Medical Emergencies: Part 2 outlines quick and appropriate prehospital care for the signs and symptoms of specific problems related to shock, respiratory and cardiac failure, altered mental status, poisoning, and environmental illnesses. (60 min) (1 CE)

418 Behavioral Emergencies explores the inherent dangers and causes of behavioral emergencies and how to provide emergency medical care in these cases. (55 min) (1 CE)

419 Bleeding and Soft Tissue Injuries examines control of external bleeding, care of patients experiencing internal bleeding and shock, and types and care of open soft tissue injuries. (60 min) (1 CE)

420 Burn Treatment examines burn evaluation, selfprotection when treating a burn patient, common burn agents, burn classification by severity, burn complications, smoke inhalation, burns of the eyes, and thermal, electrical, and chemical burns. (50 min) (1 CE)

421 Bandaging and Splinting describes the proper methods for applying each type of dressing or bandage and when to apply them. (45 min) (1 CE)

422 Injuries to Muscles and Bones Injuries to Muscles and Bones explains the musculoskeletal system, mechanism of injuries, common injuries, signs and symptoms of major injuries, extremity injuries, and medical care. (45 min) (1 CE)

423 Head and Spine Injuries addresses assessing head and spinal injuries in both responsive and unresponsive patients and basic immobilization techniques. (65 min) (1 CE)

424 Emergency Childbirth discusses how the first responder should prepare and assist the mother in delivery and provide appropriate after-birth care of the mother and baby. (65 min) (1 CE)

425 Pediatric Patient Assessment outlines several assessment techniques appropriate for children, infants, and those with special needs. (40 min) (1 CE)

426 Treatment Consent Issues explains how to obtain consent for providing medical care and addresses refusal of care or transport. (40 min) (1 CE)

427 Clandestine Drug Labs addresses places where meth labs are likely to be hidden, hazards unique to clandestine lab, and how to safely secure a lab site as part of a first response investigation. (40 min) (1 CE)

428 Domestic Violence examine steps for law enforcement and EMT responses to domestic violence and roles of other first responders in domestic violence cases. (50 min) (1 CE)

429 Basic First Aid summarizes the steps you should take during a medical emergency, including responding to the scene, determining if CPR is necessary, caring for shock, recognizing symptoms, and treating various conditions that require first aid. (55 min) (1 CE)

430 Responding to Terrorism discusses different agents a terrorist might use and the different agencies involved in an emergency response, their respective roles and the methods a responder can use to protect themselves and others from possible terrorism event hazards. (75 min) (1 CE)

431 EMS Operations includes the phases of an out-of-hospital call, ambulance and equipment preparation, the role of emergency medical dispatch, and on-scene protocol for emergency vehicles. (60 min) (1 CE)

432 Fundamentals of Extrication examines the extrication process, use of common rescue tools, immobilizing entrapped patients, and rapid extrication. (60 min) (1 CE)

433 Hazardous Materials explains what to do when hazardous materials are present at a scene and examines OSHA and NFPA requirements for EMS providers and first responders. (55 min) (1 CE)

434 Multiple Casualty Incidents explores the criteria for and types of multiple casualty incidents. It also covers the Incident Command System and triage at the scene. (50 min) (1 CE)

435 Pediatric Medical Emergencies summarizes common injuries, illnesses, and physiological concerns common to emergencies involving young children and babies. (45 min) (1 CE)

436 Chemistry for First Responders guides the first responder through the fundamental concepts of chemistry and addresses safety and environmental compliance. (75 min) (1 CE)